

# LA LAMP LIDO



# HOW USE THE LAMPE LIDO?



## TECHNICAL DATA

**Power:** 1,5W

**Voltage:** 5V2A

**Batteries lithium ION (not included) L18650, 2600 mAh**

**Charging time:** around 2 hours (with USB-C charger, recommended type C / 5V 2A)

**Color temperature:** LED, 3000K (warm light)

**Protection degree IP55:** complete protection against dust and water jets



## ENVIRONMENTAL RESPECT

- Supplied without battery for easier, more cost-effective, and safe transportation
- Made from high-quality materials, the lamp is more durable and 100% recyclable
- Removable battery so it can be changed for infinite use



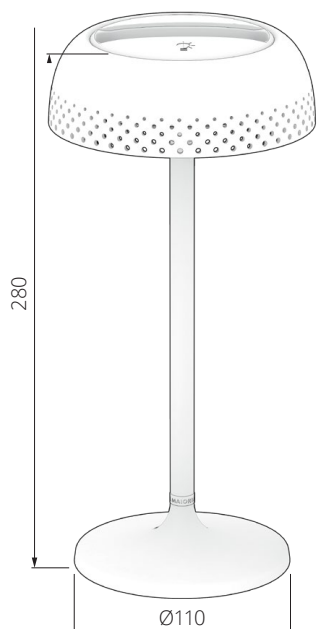
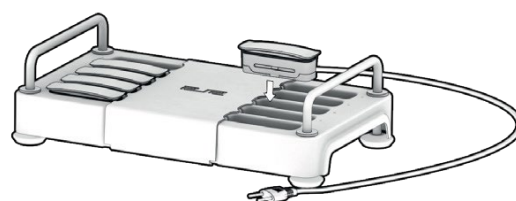
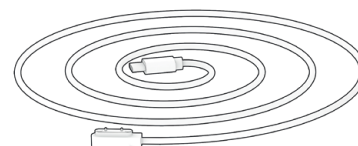
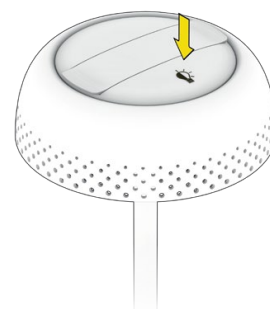
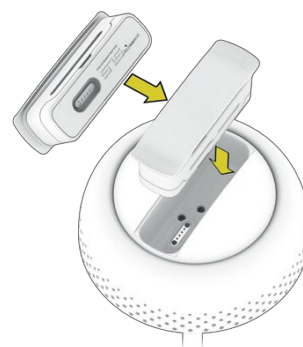
## OPERATING INSTRUCTIONS

- Touch screen, pulse the lighting icon to change the intensity (50/75/100 lumens)
- Removable battery pack for easy charging
- Supplied with 2 battery packs



## WARRANTY

La Lampe Lido is guaranteed for 3 years



white



light taupe



mustard

AVAILABLE IN 3 COLORS



LED Light



Lithium-Ion Battery



Durable



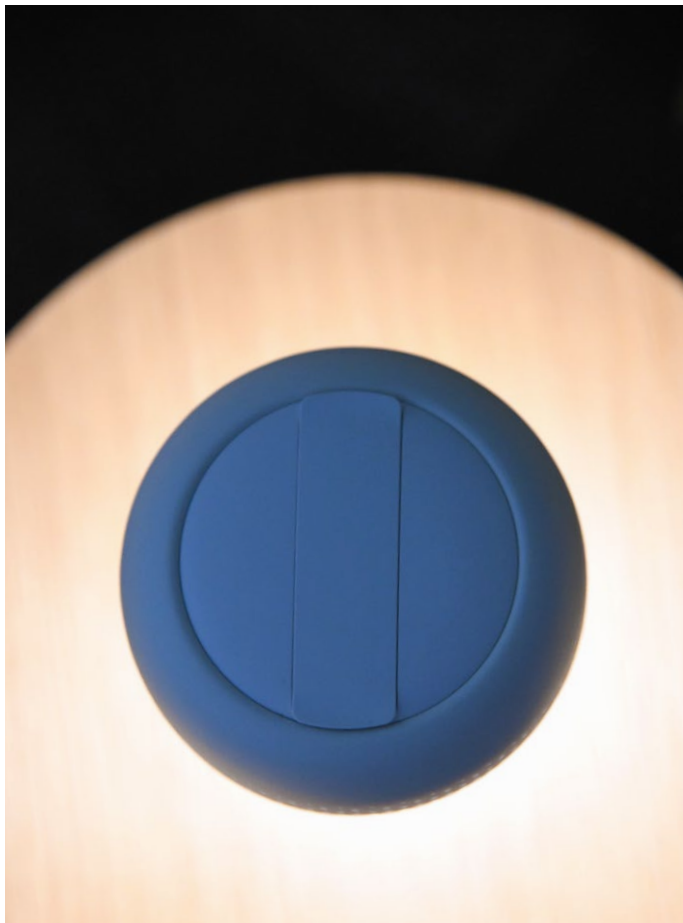
IP 55



## THE LOADING TRAY







# LA LAMP LIDO

